

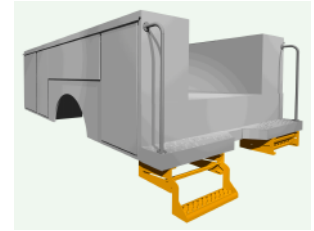
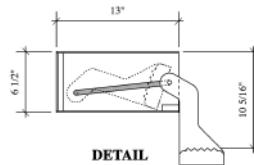
STEPS

Slide Out / Drop Down STEP

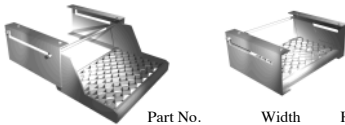


Part No.	Width	O.D. Height, Step Down
073-SD18	18"	11 3/4"
073-SD24	24"	11 3/4"

Easy Bolt On Installation.
4 3/4" Galv. Gripstrut Step.
10 Ga. Steel Side Support

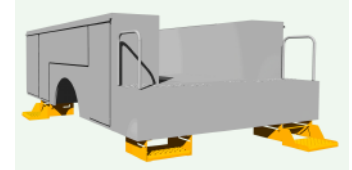


Slide Out Platform STEP



Part No.	Width	Height when Extended
073-MS18	18"	8"
073-MS24	24"	8"
073-MS32	32"	8"

Easy Bolt On Installation.
11 1/4" Galv. Gripstrut Step.
10 Ga. Steel Side Support Panels.
Compact frame height of 7".

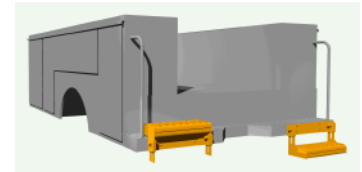


Hinged STEP

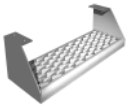


Part No.	Tread Width	Tread Depth	Overall Width	Overall Height
073-H011	12"	4 3/4"	16"	9"
073-H012	12"	4 3/4"	16"	12"
073-H021	16"	4 3/4"	20"	9"
073-H022	16"	4 3/4"	20"	12"

Easy Bolt On Installation.
1/4" Plate Brackets.
7" Gripstrut

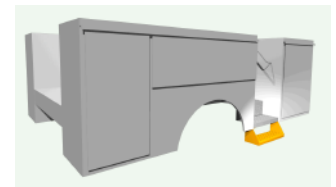


Rigid Hanging STEP

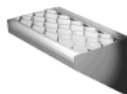


Part No.	Width	Height
073-RS01	12"	7"
073-RS02	18"	7"
073-RS03	22"	7"
073-RS04	28"	7"
073-RS05	12"	12"
073-RS06	18"	12"
073-RS07	22"	12"
073-RS08	28"	12"

Easy Bolt On Installation.
12 Ga. Galvanneal Ends.
7" Gripstrut Step.

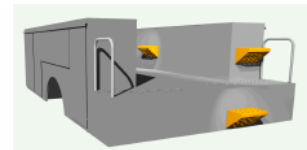


Side Wall STEP



Part No.	Tread Width	O.D. Height
073-SW01	12"	5"
073-SW02	18"	5"
073-SW03	22"	5"

Easy Bolt On Installation.
12 Ga. Galvanneal Ends and Back.
7" Gripstrut Step.



CAUTION: Improper positioning or attachment of Steps can lead to Injury. It is the purchaser's responsibility to insure that all governing regulations pertaining to steps and handholds, including, but not limited to, those imposed by OSHA, are met when using these products.

Check us out at ... www.mcbaccessories.com and www.monroebodies.com

MCB ACCESSORIES

STEPS

Cast Fold Down STEP



Part No.	O.D. Width	O.D. Height (folded up)	Depth (down)
073-CA20	6 3/4"	10 1/4"	8 5/8"

Easy Bolt On Installation.
Cast Aluminum

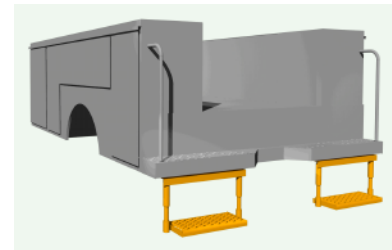


Cable STEP, Single



Part No.	Width	O.D. Height
073-CS01	12"	10"
073-CS02	12"	12"
073-CS03	12"	16"
073-CS04	12"	21"
073-CS05	18"	10"
073-CS06	18"	12"
073-CS07	18"	16"
073-CS08	18"	21"
073-CS09	20"	10"
073-CS10	20"	12"
073-CS11	20"	16"
073-CS12	20"	21"
119-CS13	28"	10"
119-CS14	28"	10"
119-CS15	28"	16"
119-CS16	28"	16"

Easy Bolt On Installation.
1 1/4" Steel Stranded Cable.
9 1/2" Gripstrut Step
Mounting Angle included.

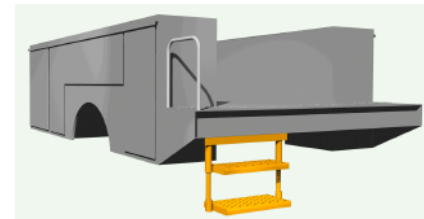


Cable STEP, Double



Part No.	Width	O.D. Height
073-CD01	12"	29-1/2"
073-CD02	18"	29-1/2"
073-CD03	20"	29-1/2"
073-CD04	28"	29-1/2"

Easy Bolt On Installation.
1 1/4" Steel Stranded Cable.
9 1/2" and 7" Gripstrut Steps.
Mounting Angle included.



CUSTOM STEPS available

Call for more information



CAUTION: Improper positioning or attachment of Steps can lead to Injury. It is the purchaser's responsibility to insure that all governing regulations pertaining to steps and handholds, including, but not limited to, those imposed by OSHA, are met when using these products.

Check us out at ... www.mcbaccessories.com and www.monroebodies.com

MCB Accessories

3312 N. 600 W., Greenfield, IN 46140, TOLL FREE: 1-866-294-6282, Phone: 317-894-8684, Fax: 317-894-1896